

AIATA

Sunfinder 38



Designed in the North.
Made in the Med.

With Aiata, every journey is an invitation to 'Navigate to your dreams.' Our passion for exceptional boats creates unforgettable experiences, blending comfort, performance, and style. From sun-soaked family fun to speedy getaways, Aiata boats capture the essence of waterfront lifestyle.



Sunfinder

38

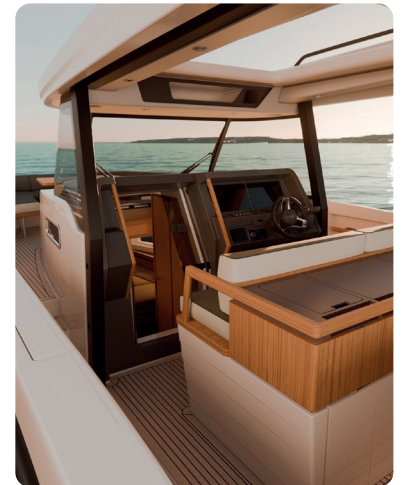




Sun-Kissed Experience on the Water

The Sunfinder 38 carries forward the effortless practicality of the Wayfinder 38, but its open-air design and sun-focused amenities make it a natural fit for turquoise waters and endless summers.

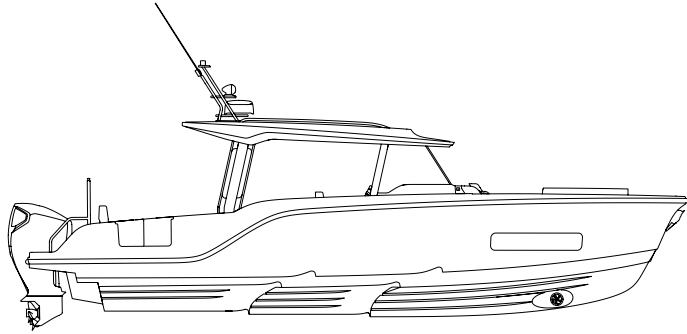
The new suntop version of the Aiata all-rounder takes the spirit of the Wayfinder and strips it back for pure open-air enjoyment.





It's all about sunshine,
sea breeze and easy days
on the water.

Sunfinder 38



Technical Specifications

Length	11.57 m / 38 ft	Black Water Tank	112 L / 30 gal
Width	3.49 m / 11.45 ft	Design Category	B10/C12
Draft	0.64 m / 2.1 ft	Number of Beds	1+1
Fuel Capacity	850 L / 224 gal	Max Speed*	53 kts
Fresh Water Capacity	200 L / 53 gal	Heaviest Options excl. Gyro, 6 Pax, Tanks @50%	

Standard Equipments

HULL

Oyster White Gelcoat RAL 1013
6 x Aluminium Cleats
Aft Rod Holders White Cap 60'

PERFORMANCE

Bow Thruster
Zipwake
2 x Honda V8 51 350 hp

NAVIGATION & SAFETY

Navigation Lights
Anchor Light
Electrical Bilge Pumps
Manual Bilge Pump
Telescopic Platform Ladder
Security Door at Cockpit

Smoke Detector
Handrails
Horn

MOORING & ANCHORING

Electric Windlass
Ultra Anchor (16 kg)
Chain 8 mm – 60 m
Fenders
Mooring Lines

ELECTRONICS

12" Gps Chartplotter
VHF
GPS Antenna
Transducer

ELECTRIC

2 x 12 V 95 Amp. Engine Batteries
3 x 12 V 115 Amp. Service Batteries
Battery Charger 12V/60 A
Battery Charger 12V/20 A for Bow Thruster
220 V Shore Power
Battery Isolator x2

STEERING STATION

Foldable Teak Step at Helm Station
Pilot Console
Windscreen
2 x Windscreen Wipers
Cup Holder
Equipment Control Switches
Driver Seat
Steering Wheel (Hydraulic)
Wireless Phone Charger

FUEL SYSTEM

Aluminium Gasoline Tank 850 L
Gasoline Filler Cap
Gasoline Level Gauge

INTERIOR COMFORT (Wheelhouse)

Foldable Wheelhouse Seats
Upholstery – Atlantic Blue
Convertible Table – Oak
Wood Works – Oak
Storage Under Seating
Indirect Led Lighting
Ceiling Light
USB Outlet
95 L Fridge

INTERIOR COMFORT (Galley)

Laminate Galley Worktop
Sink & Mixer Tap
Drawer
Cupboards
Fixed Gas Cooker
220 V Plugs

INTERIOR COMFORT (Cabin)

Cabin Upholstery – Carbon Beige
Central Double Berths
USB Outlets x 3

220 V Plug
Carpet
Ceiling Lights
Ambient Lights
Reading Lights
Portholes x3
Cabin Hatches
Curtains
Cabin Sofa

INTERIOR COMFORT (WC)

Sink & Mixer tap
Shower (Hot & Cold)
Electric WC
Porthole w/ Curtains
Cupboard
Bidet

EXTERIOR COMFORT (Fore Deck)

Camper or Sofa Version

EXTERIOR COMFORT (Aft Deck)

Cockpit Upholstery
Bifold Doors on Hull for Port & Starboard
Aft Platform to the Left & Right of Outboards
Platform Ladder
Cup Holders
Courtesy Lights

FRESH WATER SYSTEM

Fresh Water Tank 200 L
Fresh Water Filler Cap
Fresh Water Level Gauge
Water Heater 25 L

WASTE WATER SYSTEM

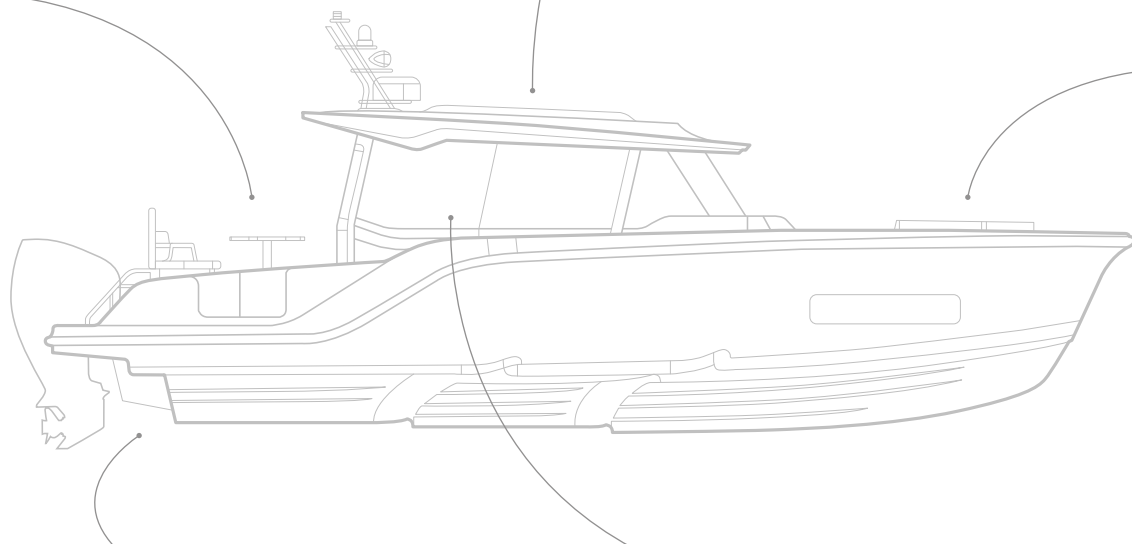
Tank 112 L
Pump (Macerator)
Gauge
Deck Discharge

Everyday Comforts on the Water

Well-integrated onboard amenities support longer and even more comfortable days on the water.

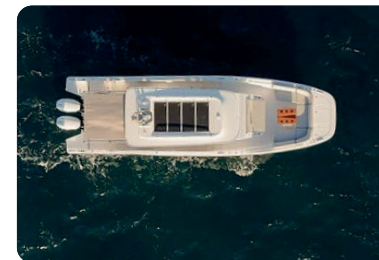
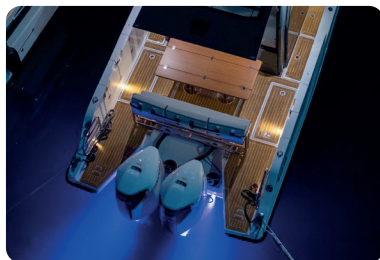
GRILL

Available as part of both the comfort wet bar and fishing wet bar configurations.



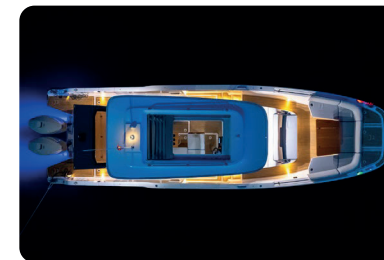
UNDERWATER LIGHT

Subtle lighting that enhances atmosphere around the yacht and the water after dark.



SOLAR PANELS

Integrated into the hardtop to generate renewable energy while at sea and support onboard systems.



RETRACTABLE ROOF

An electrically operated roof made from durable fabric, allowing a smooth transition between open-air cruising and sheltered comfort.

U-SHAPE BOW SOFA

Modular U-sofa creates a comfortable and social gathering space at the bow.



GALLEY UNIT

Designed to make onboard cooking practical, organised, and enjoyable.



Structural Design & Build Quality

Aiata production follows established manufacturing processes that ensure safety, structural integrity, and consistent build quality. Advanced composite techniques, controlled production methods, and precision automation support accuracy and repeatability throughout the build.

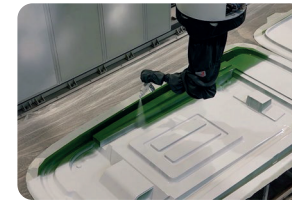
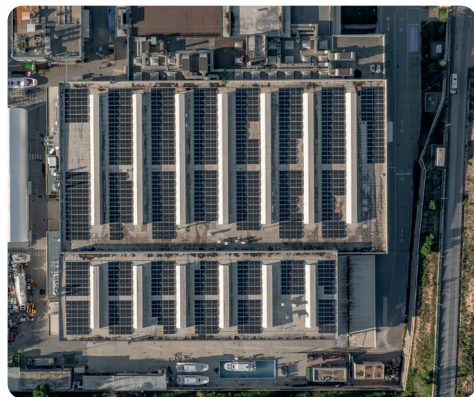
ADVANCED COMPOSITE CONSTRUCTION

Vacuum infusion allows us to build strong, lightweight structures by precisely controlling the resin content.



SOLAR ENERGY IN PRODUCTION

We use solar power to supply part of the electricity needed in our production, reducing reliance on external energy sources.



PRECISION MANUFACTURING

Advanced automation is integrated into our manufacturing process. Robots apply the gelcoat with consistent thickness and perform cutting tasks with high accuracy, ensuring clean lines, a flawless surface finish, and a reduced risk of imperfections across every boat.



LONG-TERM STRUCTURAL PROTECTION

Key structural components throughout the fleet are built using vinylester resin to enhance strength and durability. Its low water absorption and high resistance to hydrolysis help reduce the risk of osmotic degradation, protecting the structure over time in demanding marine conditions.

AIATA



Aiata derives from “Ay Ata”, signifying Grandfather Moon God, in Turkic mythology. Throughout history, the Moon has held a significant importance for seafarers due to its control over the Earth’s tides. Aiata is the guiding beacon of the seas.



Navigate to Your Dreams



ANADOLU GRUBU

AIATABOATS.COM



Aiata is proud to be a part of the Anadolu Group, a global leader operating in seven sectors, including automotive, energy, and agriculture, with a presence in over 20 countries. With more than 50 years of expertise in engine manufacturing and a reputation for excellence, Anadolu Group provides Aiata with the resources, innovation, and global reach to set new standards in the boating industry.